



# sweet like chocolate

Behind the facade of this Tudor-style house is a clever use of colour and light, bringing the very best out of mocha tones

PHOTOGRAPHY Avenue Design

✕ Studio/Photofoyer

WORDS Hayley Spencer



**LIVING ROOM**

The fawn tones in the grey-brown paint sing in the natural light, while the one-tone-softer curtains make the walls feel rich.

Walls in Mouse's Back; ceiling and woodwork in All White, both Farrow & Ball. Vintage coffee table, G Plan. Ilargi double 36 ceiling pendant, Grok. Lederam wall light, Catellani & Smith



## home profile

### THE OWNERS

**George Triantafillou and Daniel Zuidema, above, live here with their son Emilio. George works in banking while Dan is a digital transformation consultant.**

### THE DESIGNERS

**Holly Marder and Hedda Pier of Avenue Design Studio.**

### THE PROPERTY

**A renovated townhouse in Haarlem, the Netherlands, arranged over two floors. On the lower ground floor is the entrance hall, a living room and an open-plan kitchen-diner with bifold doors onto the garden. Over the two other floors there are four bedrooms, a small study and three bathrooms.**

When George Triantafillou and Dan Zuidema began the journey to expand their family with the addition of son Emilio, now 18 months old, they knew it was time to leave their apartment in Amsterdam in favour of a bigger home in a family-friendly area. The couple sought out a property that combined a sense of history with the possibility to create a comfortable, contemporary space. They searched for eight months before finally finding a unique Tudor-style house in Haarlem, around 20 minutes outside of the capital. 'We wanted to be in an area where houses retain the original feel of the neighbourhood, with a sense of old world charm,' says George.

After exchanging within a month, the couple quickly completed a demolition to open up the ground floor and transform the upstairs with two additional en-suite bathrooms. To bring their plans to life, the couple enlisted the help of Avenue Design Studio. Duo Holly Marder and Hedda Pier had worked on the couple's friend's home, and having seen how well they worked, they commissioned them to source everything from floors and furniture to finishing touches.

The home's beautiful facade with original stained-glass windows is protected by the Netherlands' building regulations, so once the rest of the house was gutted it was this ornate feature that set the tone for the look of the renovation. 'George and Dan chose to invest in high-quality materials and finishes. They wanted to retain the home's charm while making it both cosy and future-proof,' says Holly.

A scheme of earthy colours provides a warm backdrop to the mid-century and contemporary furniture. While this is a family home, the couple were insistent it didn't need a 'children's corner' and that they would grow into the space together. Instead, Emilio's toys are concealed by built-in cupboards. The pair have acquired just a few new pieces since moving into the house – an intentional decision in order to retain the minimal, airy feel they love.

George's passion for cooking meant a large kitchen was non-negotiable. 'We used to have a small island and I have memories of crowding around it with friends, with me cooking in the middle,' he says. 'Cooking is my main hobby, so a large kitchen was a priority.' This meant extending the house by 1.8 metres into the garden, but the results speak for themselves. The timeless, light-drenched look for this room was inspired by one of the hotel bars the pair frequent in Amsterdam, Jansz in the Pulitzer hotel, which George describes as 'inviting yet calm'. Now they are looking forward to hosting the festive season for their families. 'We are unapologetically mad about Christmas and can't wait to be gathered around the island and dining table,' says George. 'We even had the two lights above our table installed to leave space for a large tree to complete the room.'

---

×

avenuelifestyle.com

## LIVING ROOM

The panelling is a new addition and is sleek for a historic touch with a modern edge.

Vintage Big Shadow floor lamp, Marcel Wanders. Vintage SZ01 side chairs, Martin Visser. Kant sofa, Maisons du Monde. Vintage kilim rug; curtains in Madison Authentic fabric by Design of the Time, both supplied by Avenue Design Studio



## KITCHEN

This room was inspired by Jansz bar in Amsterdam's Pulitzer hotel. 'I wanted to replicate the green walls, brass fittings, use of stone and natural light,' says George.

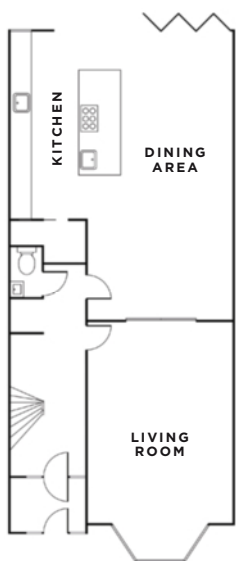
**Kitchen designed by** Avenue Design Studio; **made by** David Interieurbouw; **painted in** Green Smoke, Farrow & Ball

## DINING ROOM

'The chairs are comfortable enough to sit in for hours when socialising,' says George.

Merano **chairs**, Ton. Yacht **table**; Leaves **chandelier**, both Bolia. **Art**, sourced at the Oode gallery



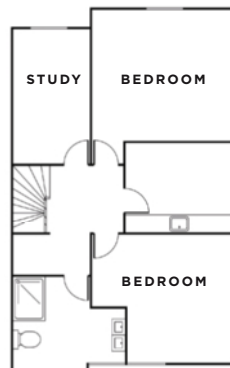


LOWER GROUND FLOOR


the blueprint



FIRST FLOOR



SECOND FLOOR



“Getting the strength and direction of the lighting right was essential for setting the perfect mood”

---

## BEDROOM

Ochre pillowcases help to join the wood floor and table aesthetically to the bed, feeling curated and cohesive.

Walls in De Nimes by Farrow & Ball. Bed, Coco-Mat. Bedding, Timeless Linen. Throw, LinenMe

## BATHROOM

Placing metro tiles vertically instead of horizontally feels like a contemporary take on a modern-classic look.

Bathroom and all materials supplied by Intercodam



## home truths

### THE PIECE THAT MADE YOUR HOME COMPLETE?

The vintage Marcel Wanders floor lamp. I was sceptical but it suits the living room perfectly.

### FAVOURITE FINISHING TOUCHES?

The Buster + Punch light switches – they look like they came straight out of a flight deck.

### YOUR HAPPY PLACE?

Having drinks outside at twilight while Miles Davis plays on the Sonos.

### FAVOURITE CHRISTMAS TRADITION?

We attend Midnight Mass and love coming home and being surrounded by fairy lights.

### GO-TO BRANDS?

Bolia for living and design, Zara Home for the details.

### THE ONE THING GUESTS COMMENT ON MOST?

The striking statuario marble worktops and splashback in the kitchen.